

2014 ADOPTION SCORECARD

Local Authority Scorecard

December 2014

Children's Services and Departmental Strategy Directorate

Adoption Scorecard

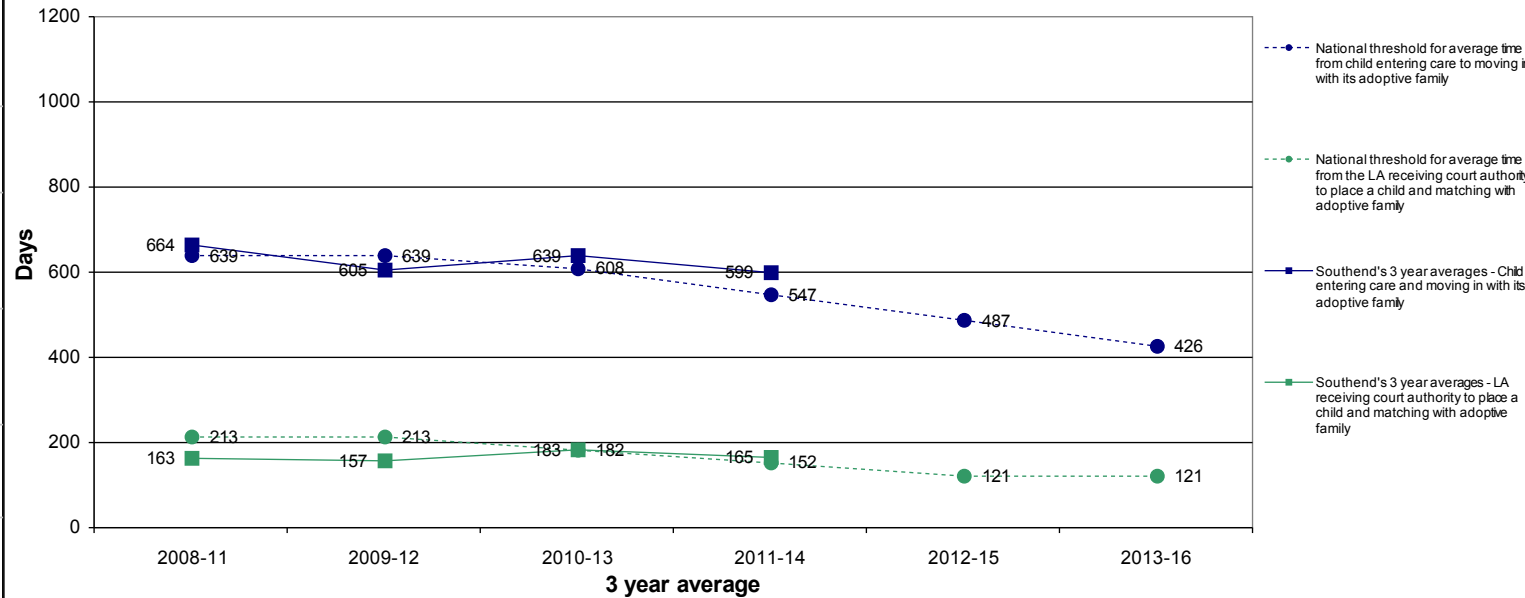
Choose Local Authority

Southend

Children

	Average time between a child entering care and moving in with its adoptive family, for children who have been adopted (days)	Average time between a local authority receiving court authority to place a child and the local authority deciding on a match to an adoptive family (days)	Children who wait less than 18 months between entering care and moving in with their adoptive family (number and %)
LA's 3 year average (2011-14)	599	165	60 (63%)
1 year trend - Improvement from 2013 to 2014	Average time in 2014 was shorter than in 2013	Average time in 2014 was shorter than in 2013	n/a
3 year trend - Improvement from 2010-13 to 2011-14	Average time in 2011-14 was shorter than in 2010-13	Average time in 2011-14 was shorter than in 2010-13	n/a
England 3 year average (2011-14)	628	217	11,360 (51%)
Distance from 2011-14 performance threshold	52 days	13 days	n/a

Average Time Indicators



Adopters

	Number of approved adoptive families as at 31 March 2014	Proportion of adoptive families who were matched to a child during 2013-14 who waited more than 3 months from approval to being matched to a child
LA average	30	38
England	5,795	58

Related Information

	Adoptions from care (number adopted and % leaving care who are adopted)	Number and % of children for whom the permanence decision has changed away from adoption	Average time between a child entering care and moving in with its adoptive family. Where times for children who are adopted by their foster family are stopped at the date the child moved in with the foster family (days)	Adoptions of children from ethnic minority backgrounds (number adopted and % of BME children leaving care who are adopted)	Adoptions of children aged five or over (number adopted and % of children aged 5 or over leaving care who are adopted)	Average length of care proceedings locally (weeks)	Number of children awaiting adoption (as at 31 March 2014)	Number of children awaiting adoption with a placement order (as at 31 March 2014)	Number of applications for approval as an adopter still being assessed (not yet approved or rejected) as at 31 March 2014
LA's 3 year (2011-14)	70 (22%)	15 (13%)	486	10 (20%)	20 (9%)	47	15	5	20
England 3 year (2011-14)	12,530 (14%)	3,230 (12%)	525	1,910 (8%)	2,790 (5%)	48	6,370	4,680	4,245

Adoption Scorecard

Statistical Neighbour Comparisons																
			Children			Adopters		Related Information								
			Average time between a child entering care and moving in with its adoptive family, for children who have been adopted (days)	Average time between a local authority receiving court authority to place a child and the local authority deciding on a match to an adoptive family (days)	Children who wait less than 18 months between entering care and moving in with their adoptive family (%)	Number of approved adoptive families as at 31 March 2014	Proportion of adoptive families who were matched to a child during 2013-14 who waited more than 3 months from approval to being matched to a child (%)	Adoptions from care (% leaving care who are adopted)	% of children for whom the permanence decision has changed away from adoption	Average time between a child entering care and moving in with its foster family, for children who have been adopted by their foster parents (days)	Adoptions of children from ethnic minority backgrounds (% of BME children leaving care who are adopted)	Adoptions of children aged five or over (% of children aged 5 or over leaving care who are adopted)	Average length of care proceedings locally (weeks)	Number of children awaiting adoption (as at 31 March 2014)	Number of children awaiting adoption with a placement order (as at 31 March 2014)	Number of applications for approval as an adopter still being assessed (not yet approved or rejected) as at 31 March 2014
882	Southend		599	165	63	30	38	22	13	486	20	9	47	15	5	20
866	Swindon	Very Close	870	197	53	25	50	9	x	587	x	4	42	15	10	10
879	Plymouth	Very Close	525	99	50	40	94	21	3	515	x	8	42	80	55	0
887	Medway	Very Close	728	243	37	25	35	15	9	486	x	5	54	45	35	20
837	Bournemouth	Very Close	513	163	63	30	63	17	x	478	13	5	37	20	20	20
886	Kent	Very Close	680	223	49	155	35	13	15	563	3	4	50	140	105	125
373	Sheffield	Very Close	593	271	57	40	83	17	10	527	12	5	44	60	50	40
921	Isle Of Wight	Very Close	701	222	58	5	x	10	x	494	x	7	40	20	10	10
894	Telford & Wrekin	Very Close	340	45	79	NA	NA	20	x	328	13	x	33	15	15	NA
845	East Sussex	Very Close	536	199	54	40	37	20	8	473	12	6	46	85	65	35
836	Poole	Very Close	527	176	59	25	65	13	25	376	0	5	43	10	5	15
	Statistical Neighbours		601	184	56	43	58	16	12	483	9	5	43	49	37	31
970	England		628	217	51	5,795	58	14	12	525	8	5	48	6,370	4,680	4,245